



# MANUAL ROLL LIFTER

**Model : RL-10 M3 | Capacity : 1000 Kgs**

"Jay" Manual Roll Lifters are compact in design and are hand operated where lifting is effected by hydraulic hand pump. The Manual roll lifters are ideal equipment for lifting & shifting paper or film rolls etc. for variety of industries where material in roll forms are handled. They lift the object with most delicately and transport these items. The fork, mast and carriage made from high quality steel profile provides durability and sturdiness of the lifter. The inner mast forks and carriage assembly are fitted with sealed ball bearing rollers and side thrust rollers to prevent lateral play.

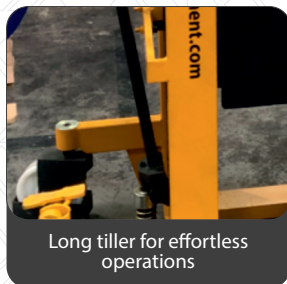
Manual Roll Lifter are hand operated version where lifting is effected by hydraulic hand pump & movement is with pull/push operation. "JAY" provides Manual Roll Lifters upto 1000 kgs with lift height upto 1600mm.

### KEY FEATURES:

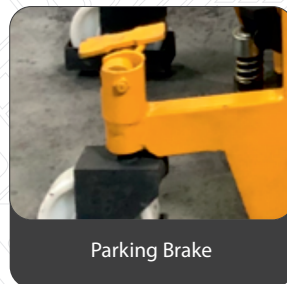
- Long tiller for effortless operations
- Heavy duty chassis
- Quick lifting pump
- Parking brakes for safety in ideal condition



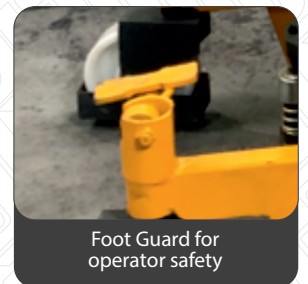
Ergonomic handle / Clear View



Long tiller for effortless operations



Parking Brake



Foot Guard for operator safety



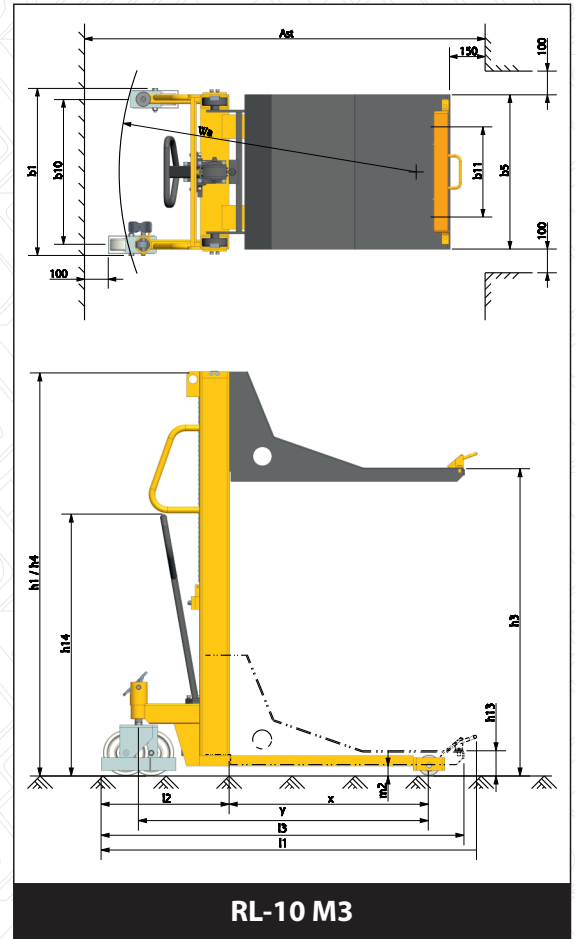
## SPECIAL PURPOSE EQUIPMENTS



# MANUAL ROLL LIFTER

## SPECIFICATIONS

			UNIT	RL-10 M3	RL-10 M3
CHARACTERISTICS	Drive type/Power	-	-	Manual	Manual
	Operation type/Driving mode	-	-	Hand	Hand
	Rated load capacity	Q	Kg	1000	1000
	Load centre distance	c	mm	700	700
	Track/Wheel base	Y	mm	1133	1133
WHEEL CHASSIS	Tyre	-	-	Nylon	Nylon
	Tyre size, rear/drive side	-	mm	Ø180X50	Ø180X50
	Tyre size, front/load side	-	mm	Ø82X70	Ø82X70
	Wheel number (front/load+rear/drive)	-	-	2+2	2+2
BASIC DIMENSION	Lift height	h3	mm	1200	1600
	Mast height lowered	h1	mm	1600	2000
	Extended mast height	h4	mm	1600	2000
	Handle height minimum/maximum	h14	mm	640/1040	640/1040
	Platform lowered height	h13	mm	100	100
	Overall length [With flap]	l1	mm	1655	1655
	Overall length [Without flap]	l3	mm	1555	1555
	Overall width	b1	mm	700	700
	Width Over carriage/Lateral distance of carriage	b5	mm	650	650
	Ground clearance	m2	mm	29	29
	Aisle width for reel w-800 x dia-1200 sideway/crossway	Ast	mm	2200	2200
	Aisle width for reel w-1000 x dia-1200 lengthway	Ast	mm	2250	2250
	Turning radius	Wa	mm	1600	1600
PERFORMANCE/CAPABILITY	Lifting speed - laden/unladen	Per strok	mm	24	24
	Lowering speed - laden/unladen	-	mm	Variable	Variable
	Parking brake	-	-	Manual	Manual
OTHER	Sound pressure level at operator's ear	-	dB (A)	<70	<70
	Turning angle	-	°	160	160
WEIGHT	Net weight	-	kg	280	310



\* This specification sheet only provides technical values for the standard equipment only. Customised equipments, Non-standard tyres, different masts, additional equipment, use of accessories, etc. may produce other values  
 \* The values in the table are as per the standard test practices, and actual values may differ as per the site conditions.  
 \* We reserve the rights to technical changes and improvements, without any prior intimations.

DEC-2023

